

***ADS5500/5541/5542/5520/
5521/5522 14- and 12-Bit Single
Channel ADC EVM***

User's Guide

IMPORTANT NOTICE

Texas Instruments Incorporated and its subsidiaries (TI) reserve the right to make corrections, modifications, enhancements, improvements, and other changes to its products and services at any time and to discontinue any product or service without notice. Customers should obtain the latest relevant information before placing orders and should verify that such information is current and complete. All products are sold subject to TI's terms and conditions of sale supplied at the time of order acknowledgment.

TI warrants performance of its hardware products to the specifications applicable at the time of sale in accordance with TI's standard warranty. Testing and other quality control techniques are used to the extent TI deems necessary to support this warranty. Except where mandated by government requirements, testing of all parameters of each product is not necessarily performed.

TI assumes no liability for applications assistance or customer product design. Customers are responsible for their products and applications using TI components. To minimize the risks associated with customer products and applications, customers should provide adequate design and operating safeguards.

TI does not warrant or represent that any license, either express or implied, is granted under any TI patent right, copyright, mask work right, or other TI intellectual property right relating to any combination, machine, or process in which TI products or services are used. Information published by TI regarding third-party products or services does not constitute a license from TI to use such products or services or a warranty or endorsement thereof. Use of such information may require a license from a third party under the patents or other intellectual property of the third party, or a license from TI under the patents or other intellectual property of TI.

Reproduction of information in TI data books or data sheets is permissible only if reproduction is without alteration and is accompanied by all associated warranties, conditions, limitations, and notices. Reproduction of this information with alteration is an unfair and deceptive business practice. TI is not responsible or liable for such altered documentation.

Resale of TI products or services with statements different from or beyond the parameters stated by TI for that product or service voids all express and any implied warranties for the associated TI product or service and is an unfair and deceptive business practice. TI is not responsible or liable for any such statements.

Following are URLs where you can obtain information on other Texas Instruments products and application solutions:

Products		Applications	
Amplifiers	amplifier.ti.com	Audio	www.ti.com/audio
Data Converters	dataconverter.ti.com	Automotive	www.ti.com/automotive
DSP	dsp.ti.com	Broadband	www.ti.com/broadband
Interface	interface.ti.com	Digital Control	www.ti.com/digitalcontrol
Logic	logic.ti.com	Military	www.ti.com/military
Power Mgmt	power.ti.com	Optical Networking	www.ti.com/opticalnetwork
Microcontrollers	microcontroller.ti.com	Security	www.ti.com/security
		Telephony	www.ti.com/telephony
		Video & Imaging	www.ti.com/video
		Wireless	www.ti.com/wireless

Mailing Address: Texas Instruments
Post Office Box 655303 Dallas, Texas 75265

EVM IMPORTANT NOTICE

Texas Instruments (TI) provides the enclosed product(s) under the following conditions:

This evaluation kit being sold by TI is intended for use for **ENGINEERING DEVELOPMENT OR EVALUATION PURPOSES ONLY** and is not considered by TI to be fit for commercial use. As such, the goods being provided may not be complete in terms of required design-, marketing-, and/or manufacturing-related protective considerations, including product safety measures typically found in the end product incorporating the goods. As a prototype, this product does not fall within the scope of the European Union directive on electromagnetic compatibility and therefore may not meet the technical requirements of the directive.

Should this evaluation kit not meet the specifications indicated in the EVM User's Guide, the kit may be returned within 30 days from the date of delivery for a full refund. **THE FOREGOING WARRANTY IS THE EXCLUSIVE WARRANTY MADE BY SELLER TO BUYER AND IS IN LIEU OF ALL OTHER WARRANTIES, EXPRESSED, IMPLIED, OR STATUTORY, INCLUDING ANY WARRANTY OF MERCHANTABILITY OR FITNESS FOR ANY PARTICULAR PURPOSE.**

The user assumes all responsibility and liability for proper and safe handling of the goods. Further, the user indemnifies TI from all claims arising from the handling or use of the goods. Please be aware that the products received may not be regulatory compliant or agency certified (FCC, UL, CE, etc.). Due to the open construction of the product, it is the user's responsibility to take any and all appropriate precautions with regard to electrostatic discharge.

EXCEPT TO THE EXTENT OF THE INDEMNITY SET FORTH ABOVE, NEITHER PARTY SHALL BE LIABLE TO THE OTHER FOR ANY INDIRECT, SPECIAL, INCIDENTAL, OR CONSEQUENTIAL DAMAGES.

TI currently deals with a variety of customers for products, and therefore our arrangement with the user **is not exclusive**.

TI assumes **no liability for applications assistance, customer product design, software performance, or infringement of patents or services described herein**.

Please read the EVM User's Guide and, specifically, the EVM Warnings and Restrictions notice in the EVM User's Guide prior to handling the product. This notice contains important safety information about temperatures and voltages. For further safety concerns, please contact the TI application engineer.

Persons handling the product must have electronics training and observe good laboratory practice standards.

No license is granted under any patent right or other intellectual property right of TI covering or relating to any machine, process, or combination in which such TI products or services might be or are used.

Mailing Address:

Texas Instruments
Post Office Box 655303
Dallas, Texas 75265

EVM WARNINGS AND RESTRICTIONS

It is important to operate this EVM within the specified input and output voltage ranges described in the EVM user's guide.

Exceeding the specified input range may cause unexpected operation and/or irreversible damage to the EVM. If there are questions concerning the input range, please contact a TI field representative prior to connecting the input power.

Applying loads outside of the specified output range may result in unintended operation and/or possible permanent damage to the EVM. Please consult the EVM User's Guide prior to connecting any load to the EVM output. If there is uncertainty as to the load specification, please contact a TI field representative.

During normal operation, some circuit components may have case temperatures greater than 60°C. The EVM is designed to operate properly with certain components above 60°C as long as the input and output ranges are maintained. These components include but are not limited to linear regulators, switching transistors, pass transistors, and current sense resistors. These types of devices can be identified using the EVM schematic located in the EVM User's Guide. When placing measurement probes near these devices during operation, please be aware that these devices may be very warm to the touch.

Mailing Address:

Texas Instruments
Post Office Box 655303
Dallas, Texas 75265

Contents

1	Overview	1-1
1.1	Purpose	1-2
1.2	EVM Basic Functions	1-2
1.3	Power Requirements	1-2
1.4	ADS55xx EVM Operational Procedure	1-3
2	Circuit Description	2-1
2.1	Schematic Diagram	2-2
2.2	Circuit Function	2-2
2.2.1	Analog Inputs	2-2
2.2.2	Clock Inputs	2-2
2.2.3	Control Inputs	2-3
2.2.4	Power	2-3
2.2.5	Outputs	2-3
3	Physical Description	3-1
3.1	PCB Layout	3-2
3.2	Parts List	3-11
3.3	Schematics	3-12

Figures

3-1	Top Layer	3-2
3-2	Top Layer (NH)	3-3
3-3	Layer 2, Ground Plane	3-4
3-4	Layer 3, Split Power Plane #1	3-5
3-5	Layer 4, Split Power Plane #2	3-6
3-6	Layer 5, Ground Plane	3-7
3-7	Layer 6, Bottom Layer	3-8
3-8	Layer 6, Bottom Layer (NH)	3-9
3-9	Drill Drawing	3-10

Tables

1-1	Device List	1-3
1-2	Two-Pin Jumper List	1-3
1-3	Three-Pin Jumper List	1-3
1-4	Five-Pin Jumper List	1-3
2-1	Output Connector J8	2-4
3-1	ADS55xx Bill of Materials	3-11

Overview

This user's guide document gives a general overview of the ADS55xx evaluation module (EVM), and provides a general description of the features and functions to be considered while using this module.

Topic	Page
1.1 Purpose	1-2
1.2 EVM Basic Functions	1-2
1.3 Power Requirements	1-2
1.4 ADS55xx EVM Operational Procedure	1-3

1.1 Purpose

The ADS55xx EVM provides a platform for evaluating the ADS55xx high-speed analog-to-digital converters (ADC) family under various signal, input, and supply conditions. This document should be used in combination with the EVM schematic diagram supplied.

1.2 EVM Basic Functions

Analog input to the ADC is provided via external SMA connectors. The single-ended input the user provides is converted into a differential signal at the input of the device. One input path uses a differential amplifier, while the other input is transformer coupled.

The EVM provides external SMA connectors for input of the ADC clock. The single-ended input the user provides is converted into a differential signal at the input of the device. One input path uses an PECL differential driver, while the other input is transformer coupled. The EVM also allows the user to send a single-ended or true differential clock if desired.

Digital output from the EVM is via a 40-pin connector.

Power connections to the EVM are via banana jack sockets. Separate sockets are provided for the ADC analog and buffer supplies, the external buffer supply, and the differential amplifier supply.

1.3 Power Requirements

The EVM can be powered directly with only a single 3.3-V supply if using the module with transformer coupled input and internal reference mode. ± 5 V is required if using the differential amplifier input. Provision has also been made to allow the EVM to be powered with independent supplies to provide higher performance.

Voltage Limits

Exceeding the maximum input voltages can damage EVM components. Under voltage may cause improper operation of some or all of the EVM components.

The ADS55xx EVM provides a platform for evaluating the analog-to-digital (ADC) devices shown in Table 1–1.

Table 1–1. Device List

DEVICE	RESOLUTION	SAMPLE RATE
ADS5500	14-bit resolution	125 MSPS
ADS5541	14-bit resolution	105 MSPS
ADS5542	14-bit resolution	80 MSPS
ADS5520	12-bit resolution	125 MSPS
ADS5521	12-bit resolution	105 MSPS
ADS5522	12-bit resolution	80 MSPS

The EVM allows the user to evaluate an ADS55xx ADC under various input signal and supply conditions. This document should be used in combination with device data sheet when evaluating a device.

1.4 ADS55xx EVM Operational Procedure

The ADS55xx EVM provides a flexible means of evaluating the ADS55xx in a number of modes of operation. A basic set-up procedure that can be used as a board confidence check is as follows:

- 1) Verify all jumper settings against the schematic jumper list in the following tables:

Table 1–2. Two-Pin Jumper List

JUMPER	FUNCTION	INSTALLED	REMOVED	DEFAULT
W3	Access point for providing SCLK for programming ADC internal registers	Connects Pin 2 to GND	Removes Pin 2 from GND	Installed
W6	Access point for providing SDATA for programming ADC internal registers	Connects Pin 3 to GND	Removes Pin 3 from GND	Installed
W7	Access point for providing SEN for programming ADC internal registers	Connects Pin 4 to GND	Removes Pin 4 from GND	Installed

Table 1–3. Three-Pin Jumper List

JUMPER	FUNCTION	LOCATION: PINS 1– 2	LOCATION: PINS 2–3	DEFAULT
SJP1	Common mode voltage from ADC	Provides common mode voltage to Differential Amplifier	Provides common mode voltage to Transformer T2	2–3
SJP2	ECL Driver input power select	Provides +5 VDC	Provides +3.3 VDC	1–2
W2	ADC output enable control	ADC output enabled	ADC output disabled	1–2
SJP6	Reset polarity select	Used with active low ADC reset	Used with active high ADC reset	2–3

Table 1–4. Five-Pin Jumper List

JUMPER	FUNCTION	LOCATION	DATA FORMAT	OUTPUT CLOCK POLARITY	DEFAULT
W5	ADC data format and output clock polarity select	Pins 4–5 Pins 3–5 Pins 2–5 Pins 1–5	Straight Binary 2s Compliment Straight Binary 2s Compliment	Data valid on rising edge Data valid on rising edge Data valid on falling edge Data valid on falling edge	Pins 4–5

-
- 2) Connect supplies to the EVM as follows:
 - 3.3-V ADC output buffer supply to J17 and return to J18.
 - 3.3-V ADC analog supply to J11 and return to J10.
 - 3) Switch power supplies on.
 - 4) Use a function generator with 50- Ω output to input a 80 – 125 MHz, 0-V offset, 1 Vrms sine wave signal into J3. The frequency of the clock must be within the specification for the device speed grade.
 - 5) Use a frequency generator with a 50- Ω output to provide a 10 MHz, 0-V offset, -1 dBFS amplitude sine wave signal into J7. This provides a transformer-coupled differential input signal to the ADC.
 - 6) The digital pattern on the output connector J8 should now represent a sine wave and can be monitored using a logic analyzer.

Circuit Description

This chapter describes the circuit functions of the ADS55xx EVM.

Topic	Page
2.1 Schematic Diagram	2-2
2.2 Circuit Function	2-2

2.1 Schematic Diagram

The schematic diagram for the EVM is attached to the end of this document.

2.2 Circuit Function

The following paragraphs describe the function of individual circuits. See the appropriate data sheet for device operating characteristics.

2.2.1 Analog Inputs

The EVM can be configured to provide the ADC with either transformer-coupled or differential amplifier inputs from a single-ended source. The inputs are provided via SMA connectors J7 for transformer coupled input, and J1 and J2 for differential amplifier input. To setup for one of these options, the EVM must be configured as follows:

- 1) For a 1:1 transformer-coupled input to the ADC, a single-ended source is connected to J7. R22, and R35 must be removed and R41 and R45 must be installed. SJP1 must have pins 2 and 3 shorted. This is the default configuration for the EVM.
- 2) For a single-ended input into the differential amplifier, a single-ended source is connected to J1. R22 and R35 must be installed, and R41 and R45 must be removed. SJP1 must have pins 1 and 2 shorted. C12, C32, C35, and R40 provide the user with the option to add filters if desired.
- 3) For a differential input into the amplifier, the positive source is connected to J1 and the negative source to J2. R22 and R35 must be installed, and R41 and R45 removed. SJP1 must have pins 1 and 2 shorted. R8 must be replaced with a 54.9- Ω resistor and R19 with a 383- Ω resistor for proper amplifier termination.

2.2.2 Clock Inputs

The EVM provides three methods for inputs for the ADC clock pins. The initial configuration of the EVM provides a transformer coupled clock to the converter.

2.2.2.1 Transformer-Coupled Differential ADC Clock

To provide a transformer-coupled differential clock using a single-ended input source, C25 and C40 must be installed and R11, R25, R32, C36, C39, and C49 must be removed. R31 is 0 Ω for proper transformer configuration. This is the default configuration for the EVM.

2.2.2.2 True Differential ADC Clock

To provide a true differential ADC clock input, install J4, R11, R25, C25, and C40, replace R31 with a 49.9- Ω resistor, and remove R32, C36, C39, C49, and T3. The positive source should be connected to J3 and the negative source to J4.

2.2.2.3 ECL Differential ADC Clock

To provide an ECL differential clock input, install C36, C39, and C49 and remove C25 and C40. Configure SJP2 to provide either AVDD or +VCC supply to the ECL differential driver supply pin.

2.2.3 Control Inputs

The EVM has three discrete inputs and a 3-pin serial bus to control the operation of the device:

2.2.3.1 Output Enable

With jumper W2 installed between pins 1 and 2, the ADC outputs are enabled. The device outputs are disabled with jumper W2 installed between pins 2 and 3.

2.2.3.2 DFS Control

By adjusting the voltage on the data format and clock polarity select (DFS) pin, the user can set the mode of operation of the device. Test point 10 should be used to monitor this level. Once the appropriate voltage is reached, the ADC automatically sets the corresponding data format and clock polarity setting. Jumper W5 selects the voltage used for this pin. See Table 1–3 for the data format and clock polarity settings determined by the position of the jumper on W5.

2.2.3.3 IREF Control

By adjusting the resistance on pin 31 (IREF), the user can adjust the bias current used by the ADS55xx device. The default value for the EVM is 56.2 k Ω . Care must be taken when changing this value. See the appropriate data sheet for more information.

2.2.4 Power

Power is supplied to the EVM via banana jack sockets. A separate connection is provided for a 3.3-V analog supply (J11 and J10), 3.3-V buffer supply (J17 and J18) supply, \pm 5-V amplifier supply (J14, J13, and J12), and 3.3-V external buffer supply (J19 and J20).

2.2.5 Outputs

The data outputs from the ADC are routed to connector J8. This connector is a standard 40-pin header on a 100-mil grid, and allows easy connection to a logic analyzer. The connector pinout is listed in Table 2–1.

Table 2–1. Output Connector J8

J8 PIN	DESCRIPTION	J8 PIN	DESCRIPTION
1	DGND	21	DGND
2	Output Clock	22	Data Bit 6
3	DGND	23	DGND
4	NC	24	Data Bit 7
5	DGND	25	DGND
6	NC	26	Data Bit 8
7	DGND	27	DGND
8	NC	28	Data Bit 9
9	DGND	29	DGND
10	Data Bit 0 (LSB)	30	Data Bit 10
11	DGND	31	DGND
12	Data Bit 1	32	Data Bit 11
13	DGND	33	DGND
14	Data Bit 2	34	Data Bit 12
15	DGND	35	DGND
16	Data Bit 3	36	Data Bit 13 (MSB)
17	DGND	37	DGND
18	Data Bit 4	38	Overflow
19	DGND	39	DGND
20	Data Bit 5	40	NC

Physical Description

This chapter describes the physical characteristics and PCB layout of the EVM and lists the components used on the module.

Topic	Page
3.1 PCB Layout	3-1
3.2 Parts List	3-11

3.1 PCB Layout

The EVM is constructed on a 6-layer, 4.5-inch x 4.15-inch, 0.062-inch thick PCB using FR-4 material. The individual layers are shown in the following figures.

Figure 3–1. Top Layer

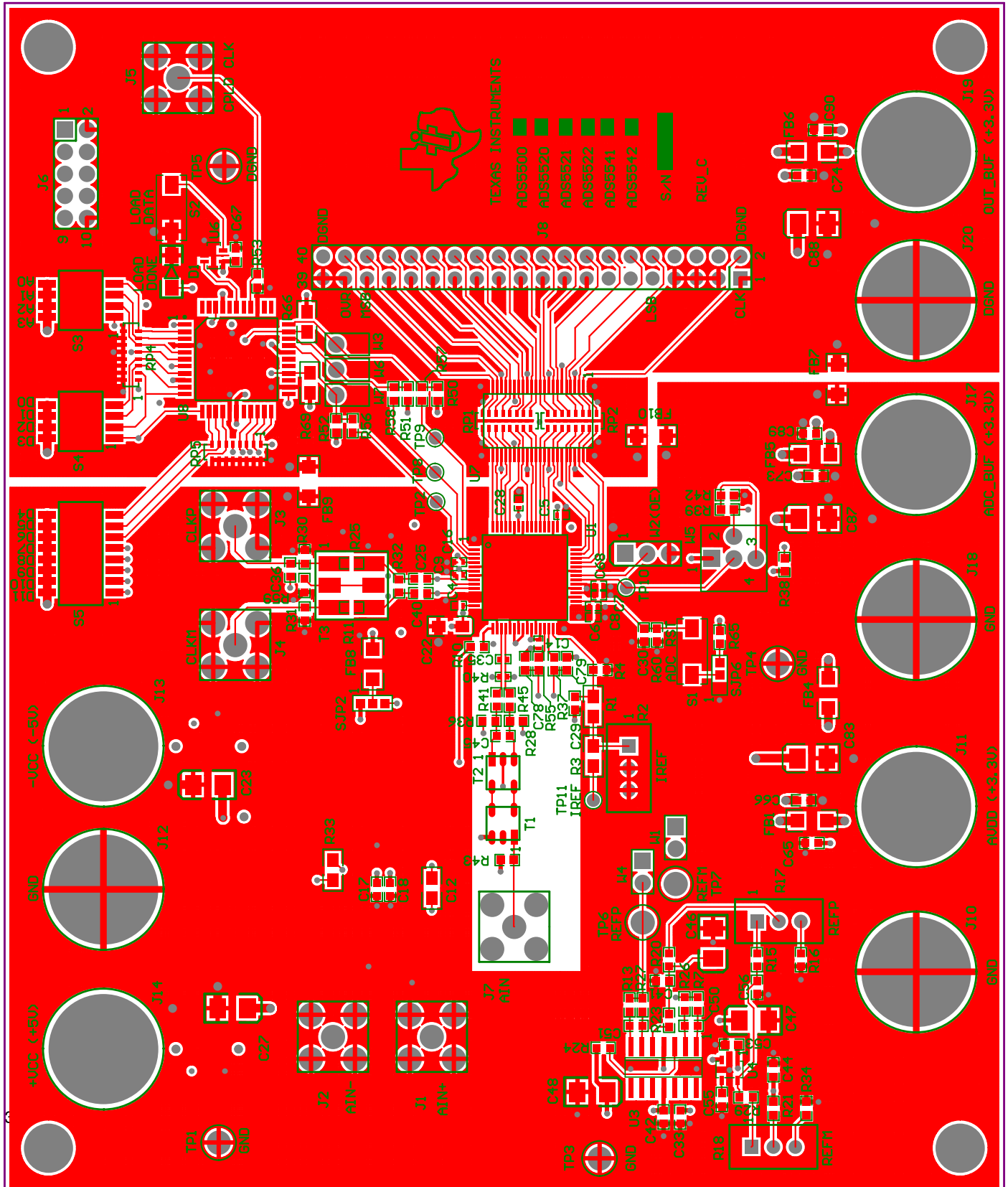
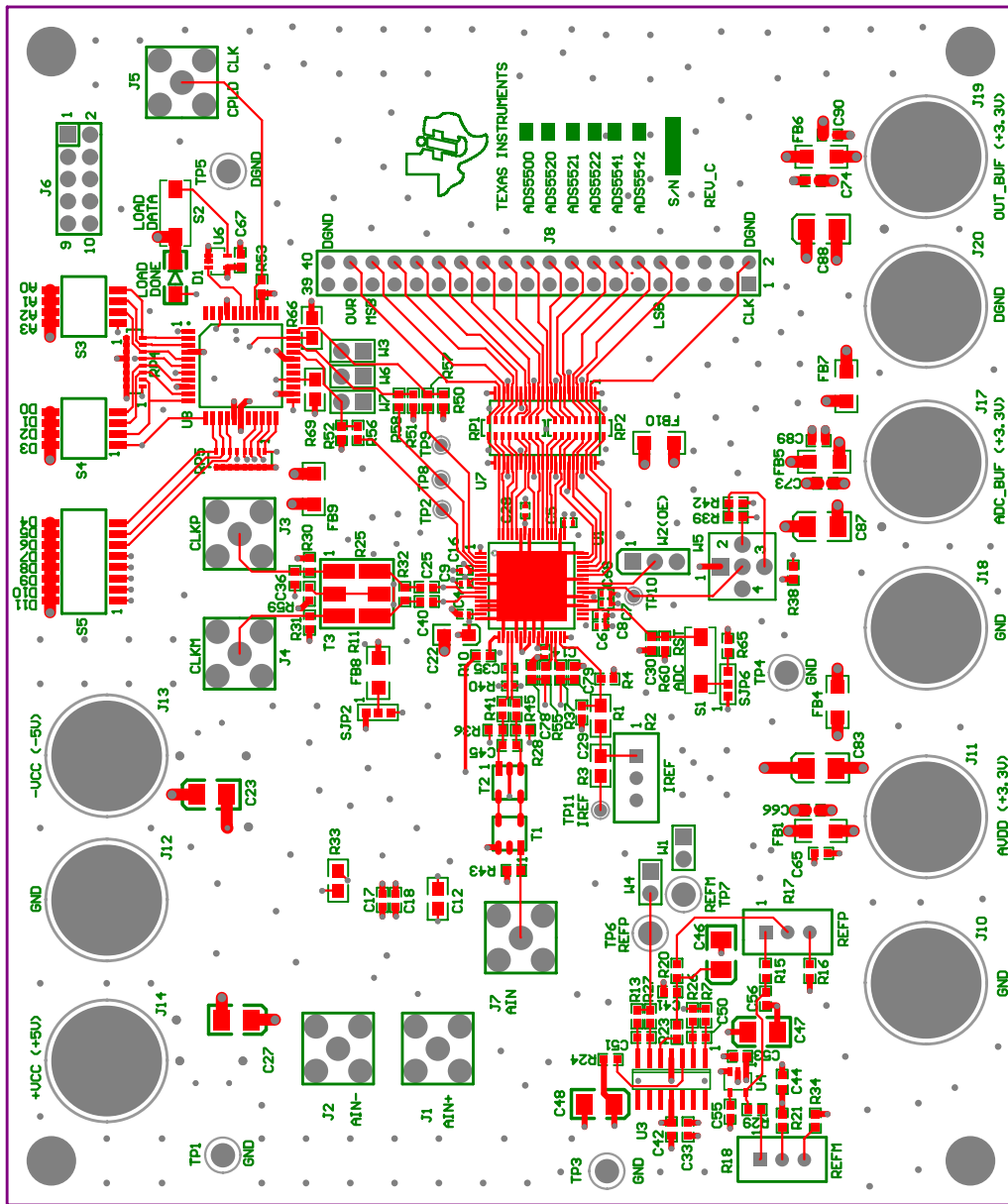


Figure 3-2. Top Layer (NH)



1 SILKSCREEN TOP

Figure 3–3. Layer 2, Ground Plane

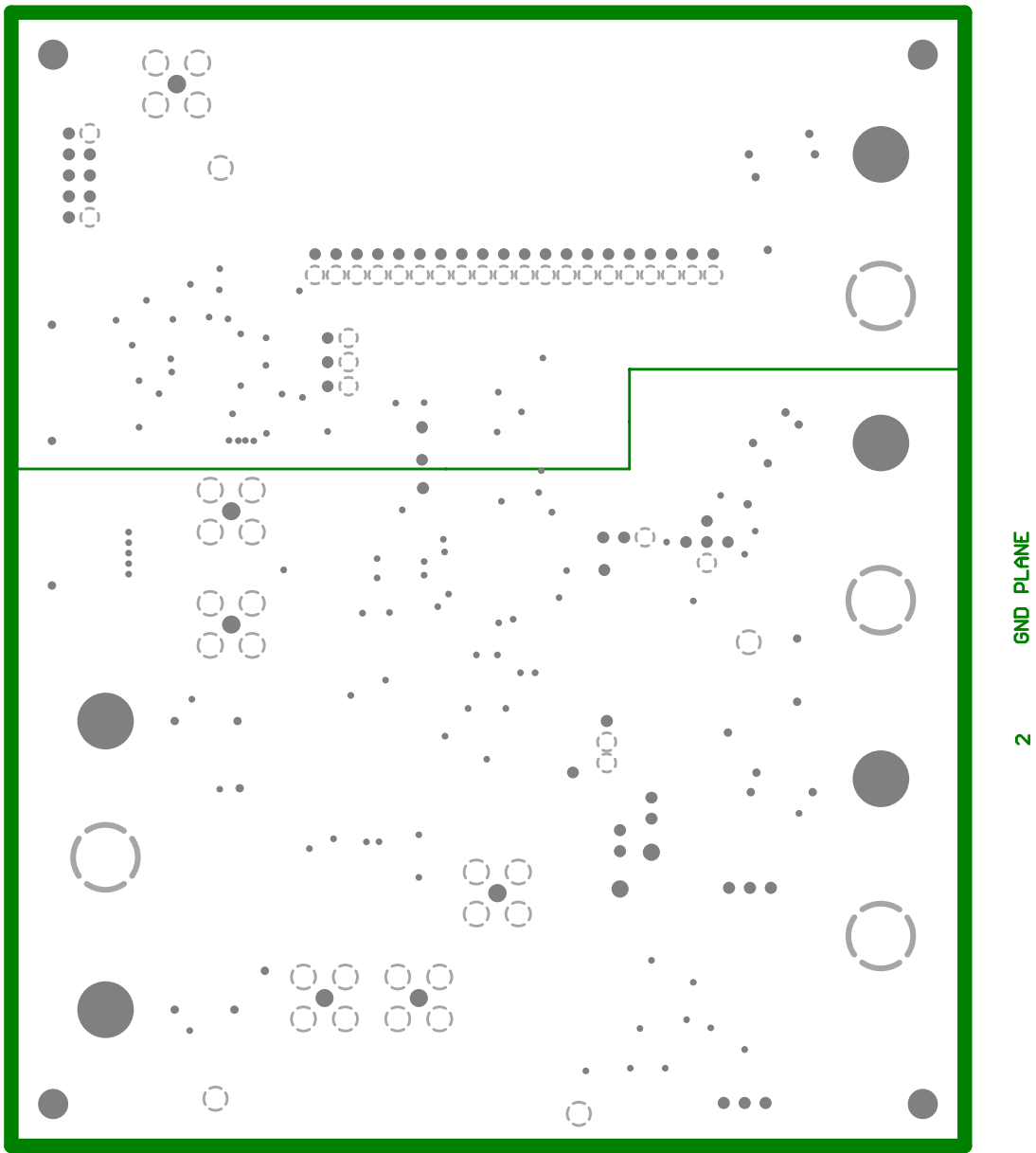
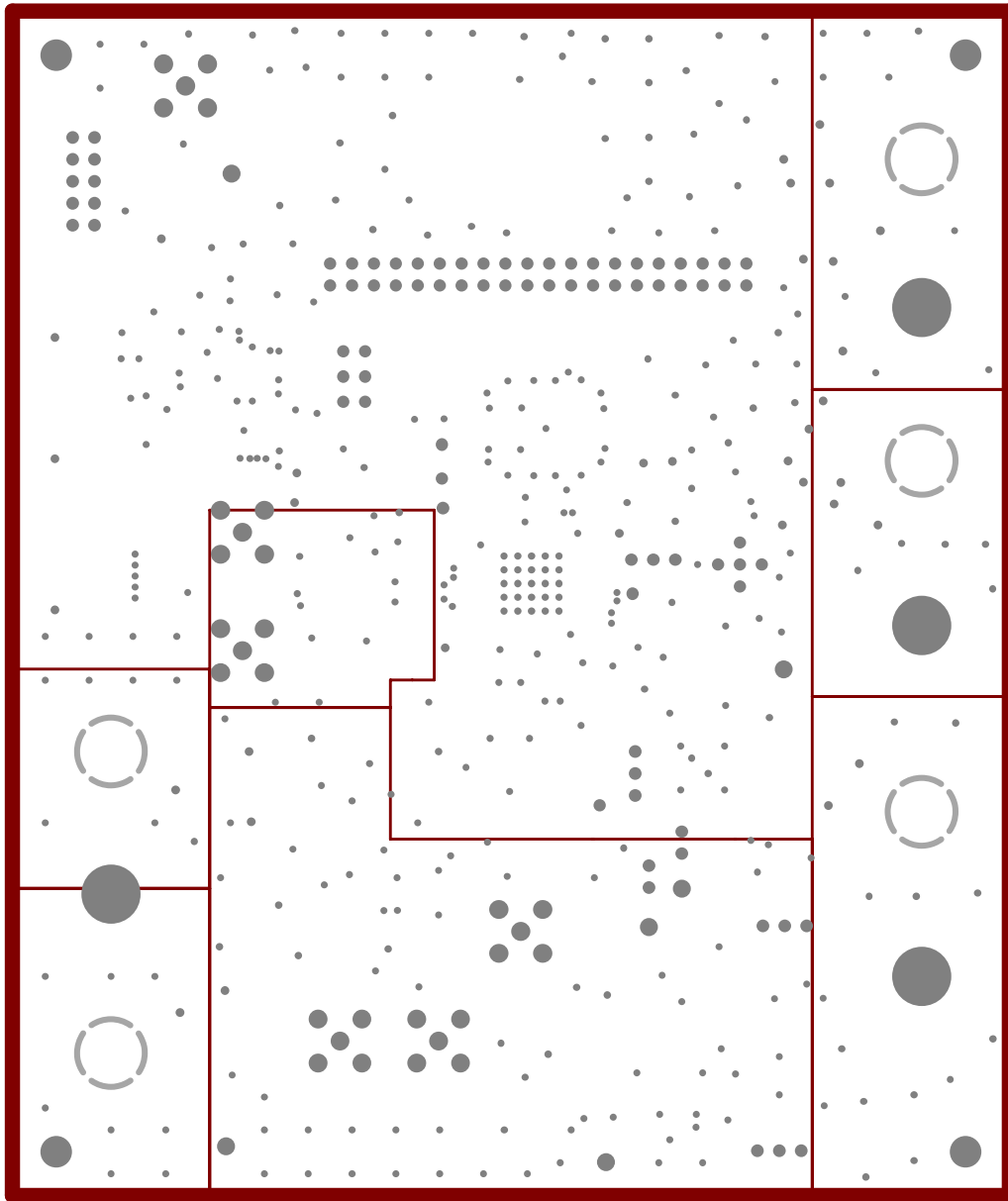


Figure 3-4. Layer 3, Split Power Plane #1



3
SPLIT PWR PLANE

Figure 3-5. Layer 4, Split Power Plane #2

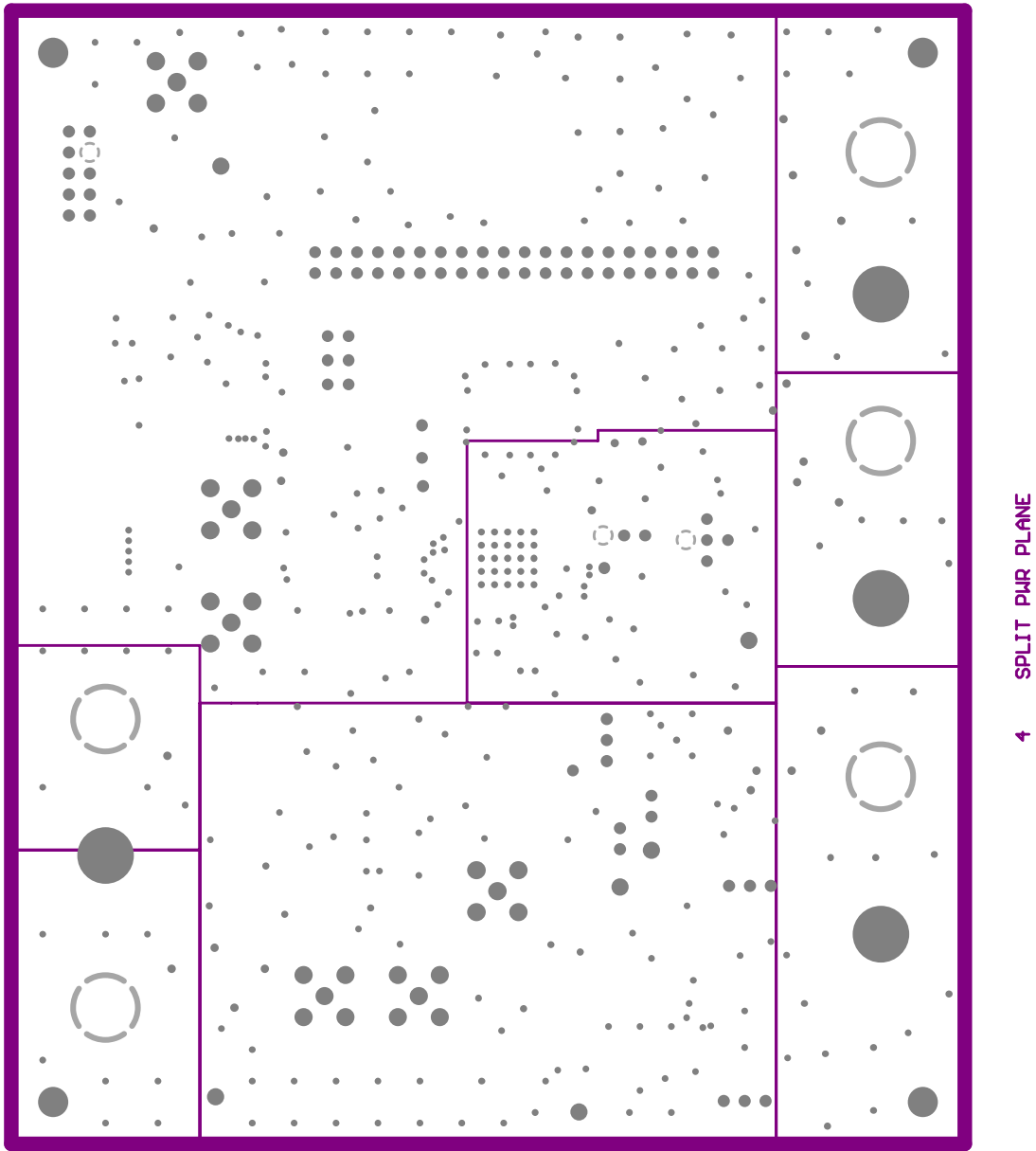
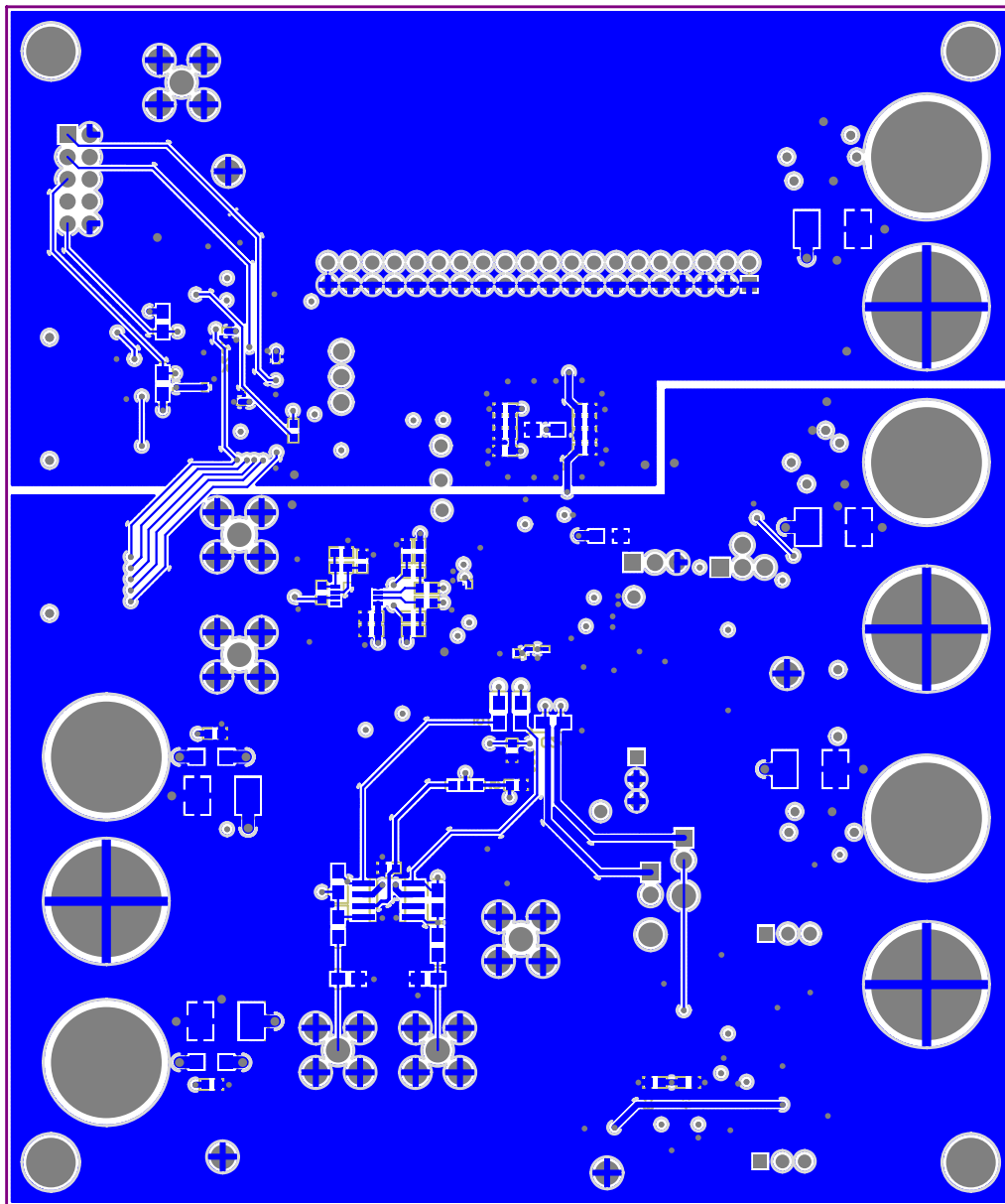


Figure 3–7. Layer 6, Bottom Layer

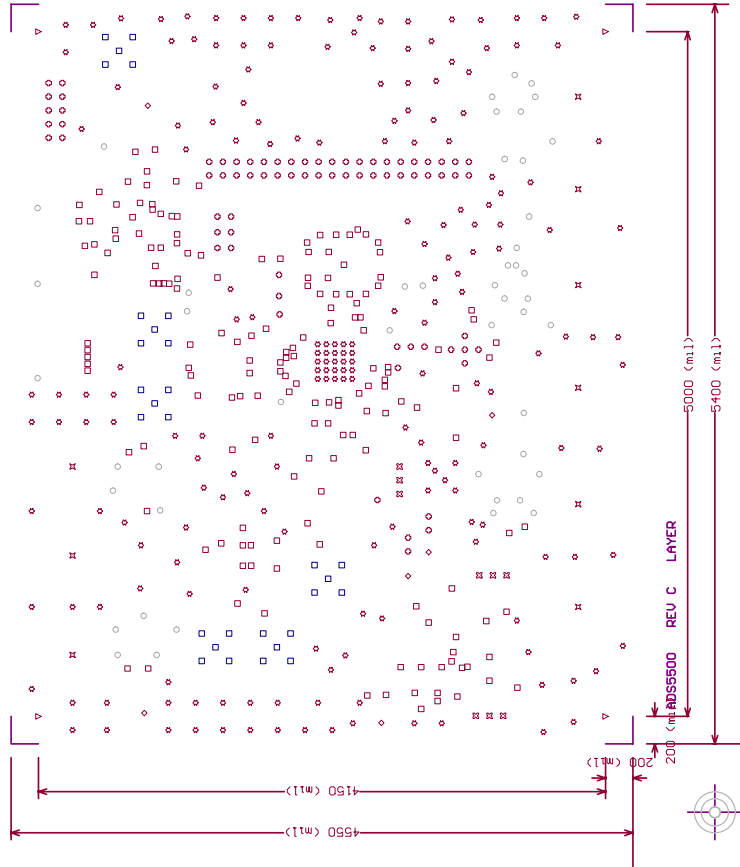


6 BOTTOM SILKSCREEN

Figure 3–9. Drill Drawing

- Notes:
1. PWB TO BE FABRICATED TO MEET OR EXCEED IPC-6012, CLASS 3 STANDARDS AND WORKMANSHIP SHALL CONFORM TO IPC-A-600, CLASS 3 - CURRENT REVISIONS
 2. BOARD MATERIAL AND CONSTRUCTION TO BE UL APPROVED AND MARKED ON THE FINISHED BOARD.
 3. LAMINATE MATERIAL: COPPER-CLAD FR-4
 4. COPPER WEIGHT: 1oz ON INTERNAL LAYERS, 1.5 oz FINISHED ON EXTERNAL LAYERS.
 5. FINISHED THICKNESS: .062 +/- .010
 6. MIN PLATING THICKNESS IN THROUGH HOLES: .001"
 7. SMOBC / HASL
 - 7A. FINISH WHITE-TIN
 - 7B. GOLD FINISH: 50-100 MICRO-NICKEL
 - 7-12 MICRO-INCHES OF GOLD
 - 7C. 3 TO 7 MICRO-INCHES OF IMMERSION GOLD OVER
 - 100-MICRO-INCHES OF ELECTROLESS-NICKEL
 - 7B-30-MICRO-INCHES OF SOFT-GOLD-OVER-100-200-MICRO-INCHES OF NICKEL PLATING
 - 7E-30-MICRO-INCHES OF HARD-GOLD-OVER-100-200-MICRO-INCHES OF NICKEL PLATING
 - (CARDEDGE-CONNECTOR-ONLY)
 8. LPI SOLDERMASK BOTH SIDES USING APPROPRIATE LAYER ARTWORK: COLOR = RED
 9. LPI SILKSCREEN AS REQUIRED: COLOR - WHITE
 10. VENDOR INFORMATION TO BE INCORPORATED ON BACK SIDE WHENEVER POSSIBLE
 11. MINIMUM COPPER CONDUCTOR WIDTH IS: 8 MILS
MINIMUM CONDUCTOR SPACING IS: 6 MILS
 12. NUMBER OF FINISHED LAYERS: 6
 13. TOP AND BOTTOM LAYERS 8 MIL TRACES TO BE 50 OHM IMPEDANCE

Texas Instruments, Inc. 12500 TI Boulevard, Dallas, TX 75243	
Y. DEJONCK	J. UENBLE
ADS5500	
REV C	SCALE: 0:84
DOCUMENT CONTROL #	
Mechanical Layer 1 27-Jun-2005	



3.2 Parts List

The following pages contain the bill of materials..

3.3 Scehmatics

The following pages contain the schematics.

Bill Of Material For ADS5500 REV C 06-27-2005

Value	Footprint	QTY	Part Number	Vendor	Digi-Key Number	REF DES	TI SUPPLIED	Not Installed
CAPACITORS								
47 uF, tantalum, 20%, 10V	7343	5	ECS-T1AD476R	Panasonic	PCS2476CT-ND	C19 C21 C75 C81 C82		
10 uF, 10V, 20% Capacitor	3528	5	ECS-T1AX106R	Panasonic	PCS2106CT-ND	C23 C27 C83 C87 C88		C46 C47 C48
10 uF, 10V, 10% Capacitor	3216	3	T491A106K010AS	KEMET	399-1563-1-ND	C20 C22 C26		
.1uF,16V, 10% Capacitor	805	0	ECJ-2VB1C104K	Panasonic	PCC1812CT-ND			C24
6.8pF,50V, +/- .25pF Capacitor	805	2	08055A6R8CAT2A	AVX	478-1302-1-ND	C12 C32		
470 pF,100V, 10% Capacitor	603	4	ECJ-1VB2A471K	Panasonic	PCC1950CT-ND	C57 C59 C61 C63		C33 C34
.047uF,16V, 10% Capacitor	603	0	ECJ-1VB1H473K	Panasonic	PCC2286CT-ND			C50 C51
10 pF, 50V, +/- .5pF Capacitor	603	0	ECJ-1VC1H100D	Panasonic	PCC100CVCT-ND			C45
.01uF, 50V,10% Capacitor	603	4	ECJ-1VB1C103K	Panasonic	PCC1750CT-ND	C31 C52 C54 C69		C55
.1uF,16V, 10% Capacitor	603	19	ECJ-1VB1C104K	Panasonic	PCC1762CT-ND	C1 C13 C15 C17 C18 C25 C37 C38 C40 C58 C60 C62 C64 C65 C66 C73 C74 C89 C90		C29 C30 C36 C39 C41 C42 C43 C44 C49 C67
1uF, 6.3V,10% Capacitor	603	2	ECJ-1VB0J105K	Panasonic	PCC1915CT-ND	C78 C79		C53
2.2uF, 6.3V,+/- 80%/-20% Capacitor	603	0	ECJ-1VF0J225Z	Panasonic	PCC2181CT-ND			C56
.1uF,16V, +/- 80%/-20% Capacitor	402	14	ECJ-0EF1C104Z	Panasonic	PCC1731CT-ND	C2-C11 C14 C16 C28 C68		C71 C72 C76 C77
27 pF, 50V, 5% Capacitor	402	0	ECU-E1H270JCQ	Panasonic	PCC270CQCT-ND			C35
RESISTORS								
0 ohm resistor, 1/16 W, 1 %	805	1	ERJ-6ENF0R00V	Panasonic	P0.0CCT-ND	R8		
54.9 ohm resistor, 1/16 W, 1 %	805	1	ERJ-6ENF54R9V	Panasonic	P54.9CCT-ND	R9		
383 Ohm resistor, 1/16 W, 1 %	805	1	ERJ-6ENF3830V	Panasonic	P383CCT-ND	R12		
392 Ohm resistor, 1/16 W, 1 %	805	2	ERJ-6ENF3920V	Panasonic	P392CCT-ND	R14 R33		
412 Ohm resistor, 1/16 W, 1 %	805	1	ERJ-6ENF4120V	Panasonic	P412CCT-ND	R19		
1K Ohm resistor, 1/16 W, 1 %	805	0	ERJ-6ENF1001V	Panasonic	P1.0KCCT-ND			R66 R67 R68 R69
10K Ohm resistor, 1/16 W, 1 %	805	0	ERJ-6ENF1002V	Panasonic	P10.0KCCT-ND			R3
20K Ohm resistor, 1/16 W, 1 %	805	0	ERJ-6ENF2002V	Panasonic	P20.0KCCT-ND			R1

Bill Of Material For ADS5500 REV C 06-27-2005

Value	Footprint	QTY	Part Number	Vendor	Digi-Key Number	REF DES	TI SUPPLIED	Not Installed
0 ohm resistor, 1/16 W, 1 %	603	5		Panasonic	P0.0CCT-ND	R31 R56 R57 R58 R59		R11 R25
1 Ohm resistor, 1/16 W, 5 %	603	2	9C0603A1 JLFHT	Panasonic	311-1 GTR-ND	R37 R55		
100 ohm resistor, 1/16 W, 1%	603	0	ERJ-3EKF1000V	Panasonic	P100HCT-ND			R23 R24
113 ohm resistor, 1/16 W, 1%	603	1	ERJ-3EKF1130V	Panasonic	P113HCT-ND	R64		
24.9 ohm resistor, 1/16 W, 1%	603	2	ERJ-3EKF24R9V	Panasonic	P24.9HCT-ND	R41 R45		R22 R35
36.5 ohm resistor, 1/16 W, 1%	603	2	ERJ-3EKF36R5V	Panasonic	P36.5HCT-ND	R28 R36		R22 R35
49.9 ohm resistor, 1/16 W, 1%	603	4	ERJ-3EKF49R9V	Panasonic	P49.9HCT-ND	R10 R30 R47 R48		R7 R13 R43 R53 R62 R63
82.5 ohm resistor, 1/16 W, 1%	603	0	ERJ-3EKF82R5V	Panasonic	P82.5HCT-ND			R54
200 ohm resistor, 1/16 W, 1%	603	0	ERJ-3EKF200V	Panasonic	P200HCT-ND			R32
499 ohm resistor, 1/16 W, 1%	603	2	ERJ-3EKF499V	Panasonic	P499HCT-ND	R44 R46		R15
1K ohm resistor, 1/16 W, 1%	603	3	ERJ-3EKF1001V	Panasonic	P1.00KHCT-ND	R38 R39 R42		
2K ohm resistor, 1/16 W, 1%	603	0	ERJ-3EKF2001V	Panasonic	P2.00KHCT-ND			R26 R27
2.55K ohm resistor, 1/16 W, 1%	603	0	ERJ-3EKF2551V	Panasonic	P2.55KHCT-ND			R34
2.87K ohm resistor, 1/16 W, 1%	603	0	ERJ-3EKF2871V	Panasonic	P2.87KHCT-ND			R29
4.7K ohm resistor, 1/16 W, 1%	603	1	ERJ-3EKF4701V	Panasonic	P4.7KHCT-ND	R65		
5.62K ohm resistor, 1/16 W, 1%	603	0	ERJ-3EKF5621V	Panasonic	P5.62KHCT-ND			R16
49.9K ohm resistor, 1/16 W, 1%	603	3	ERJ-3EKF4992V	Panasonic	P49.9KHCT-ND	R50 R51 R52		
56.2K ohm resistor, 1/16 W, 1%	603	1	ERJ-3EKF5622V	Panasonic	P56.2KHCT-ND	R4		
10K ohm resistor, 1/16 W, 1%	603	1	ERJ-3EKF1002V	Panasonic	P10.0KHCT-ND	R60		R20 R21
174 ohm resistor, 1/16 W, 1 %	402	0	ERJ-2RFK1740X	Panasonic	P174LCT-ND			R40
1K VARIABLE RESISTOR	POT_RES_TH	0	CT94W102	CERMET	CT94W102-ND			R17 R18
100K VARIABLE RESISTOR	POT_RES_TH	0	CT94W104	CERMET	CT94W104-ND			R2
0 ohm R-Pack	CTS-742-8RES	0	742C163000X	CTS	742C163000X-ND			RP1 RP2

Bill Of Material For ADS5500 REV C 06-27-2005

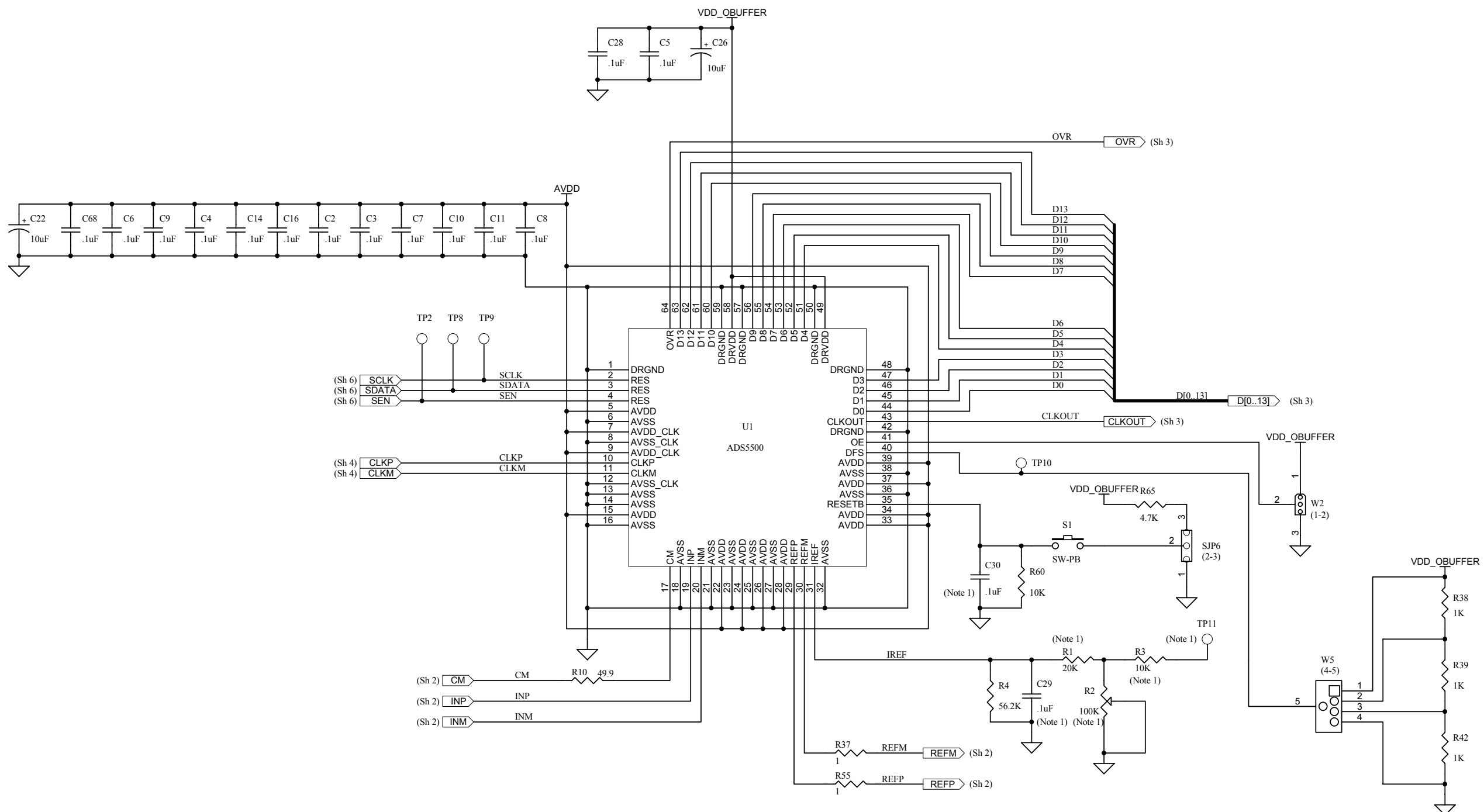
Value	Footprint	QTY	Part Number	Vendor	Digi-Key Number	REF DES	TI SUPPLIED	Not Installed
100K ohm R-Pack	CTS-742-4RES	0	742C163100KJCT	CTS	742C163100KJCT-ND			RP4 RP5
CONNECTORS, JUMPERS, HEADERS, FERRITE BEADS, TRANSFORMERS, ICS								
Ferrite Bead	1206	4	EXC-ML32A680U		P10437CT-ND	FB1 FB2 FB3 FB5 FB6 FB8 FB10		FB4 FB7 FB9
Transformer	TC4-1W_TRANSFORMER	2	TC4-1W	Mini-Circuits		T1 T2		
Transformer	MC-CD542	1	ADT4-1WT	Mini-Circuits		T3		
SMA connectors	SMA_Jack	4	901-144-8RFX	AMP	ARFX1231-ND	J1 J2 J3 J7		J4 J5
Black test point	Test_point	4	5011K-ND	Keystone	5011K-ND	TP1 TP3 TP4 TP5		
RED test point	Test_point	0	5010K-ND	Keystone	5010K-ND			TP6 TP7
RED test point	Test_point2	4	5000K-ND	Keystone	5000K-ND	TP2 TP8 TP9 TP10		TP11
2POS_header	2pos_jumper	3	HTSW-150-07-L-S	Samtec		W3 W6 W7		W1 W4
3POS_header	3pos_jumper	1	HTSW-150-07-L-S	Samtec		W2		
3 Circuit Jumpers	SJP3	3				SJP1 SJP2 SJP6		
5 Circuit Jumpers	5POS_JUMPER_TH	1				W5		
SWITCH	EVQ-PJ	1	EVQ-PJX04M	Panasonic	P8050SCT-ND	S1		S2
SWITCH 4 POSITION	SWITCH_4POS_SMT	0	DHS4S	APEM				S3 S4
SWITCH 8 POSITION	SWITCH_8POS_SMT	0	DHS8S	APEM				S5
40 pin IDC Connector	20X2X.1	1	HTSW-120-07-L-D	Samtec	N/A	J8		
10 pin IDC Connector	5X2X.1	0	HTSW-120-07-L-D	Samtec				J6
Red Banana Jacks	BANANA_JACK	5	ST-351A	ALLIED		J11 J13 J14 J17 J19		
Black Banana Jacks	BANANA_JACK	4	ST351B	ALLIED		J10 J12 J18 J20		
GREEN LED	LED-1206	0	CMD15-21VGC/TR8	Panasonic	L62205CT-ND			D1
ADS5500IPAP	64-HTQFP(PAP)	1	ADS5500IPAP	TI		U1	YES	
THS4503ID	8-SOP(D)	1	THS4503ID	TI	296-12938-5-ND	U2	YES	
OPA4227UA	14-SOP(D)	0	OPA4227UA	TI	OPA4227UA-ND			U3
TPS79225DBVR	5-SOT(DBV)	0	TPS79225DBVR	TI	296-11869-2-ND			U4
MC10EP16DT	8-TSSOP(DGK)	1	MC10EP16DT	ON Semiconductor	MC10EP16DTOS-ND	U5		

Bill Of Material For ADS5500 REV C 06-27-2005

Value	Footprint	QTY	Part Number	Vendor	Digi-Key Number	REF DES	TI SUPPLIED	Not Installed
TPS3801J25DCKR	5-SOT(DCK)	0	TPS3801J25DCKR	TI	296-3326-2-ND			U6
SN74AVC16244DGGR	48-TSSOP(DGG)	1	SN74AVC16244DGGR	TI	296-9783-1-ND		YES	
EPM7032BTC44	44-TQFP(PGT)	0	EPM7032BTC44-3	ALTERA				U8
SCREWS	4-40 screw	4						
Plastic Stand Off Hex (1/4 x .5")	4-40 screw	4	1902CK-ND	allied	1902CK-ND			

SURFACE MOUNT JUMPER LOCATION: SJP6 2-3; SJP1 2-3; SJP2 1-2;

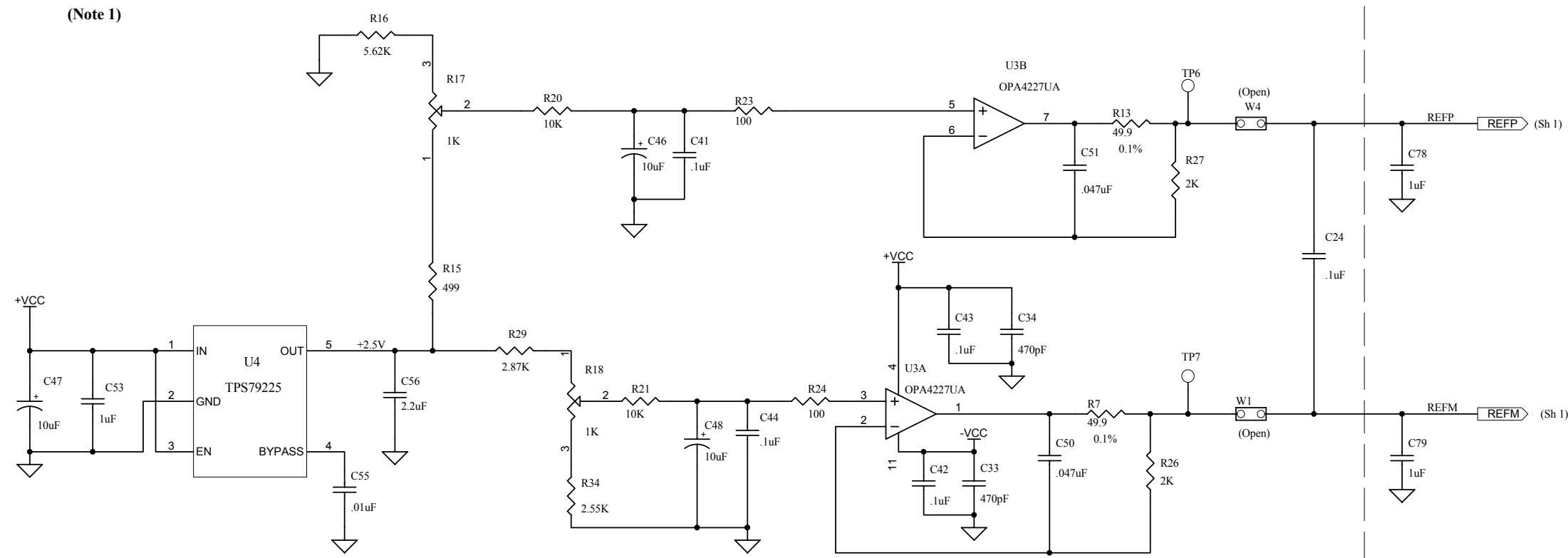
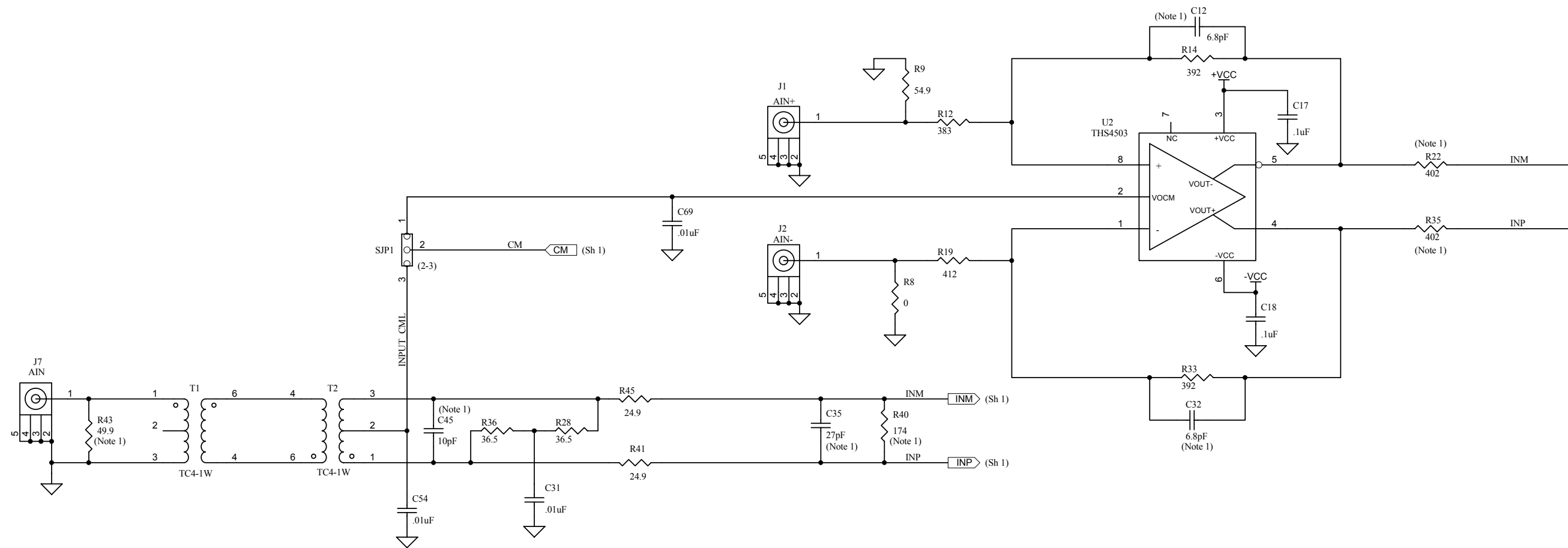
JUMPER SHUNT LOCATION: W2 PINS 1-2, W5 PINS 4-5, W1, W3, W4, W6, W7 DO NOT INSTALL;



Note 1. Part not installed

TEXAS INSTRUMENTS
 12500 TI Boulevard, Dallas, Texas 75243
 Title: **ADS5500**

Engineer: J. VENABLE	SIZE:	DATE: 27-Jun-2005	REV: C
Drawn By: Y. DEWONCK	FILE:	SHEET: 1	OF: 6



Title: ADS5500	
DOCUMENT CONTROL #	REV: C
DATE: 27-Jun-2005	SIZE: SHEET: 2 OF: 6

Engineer: J. VENABLE
 Drawn By: Y. DEWONCK
 FILE:

Note 1. Part not installed

D

C

B

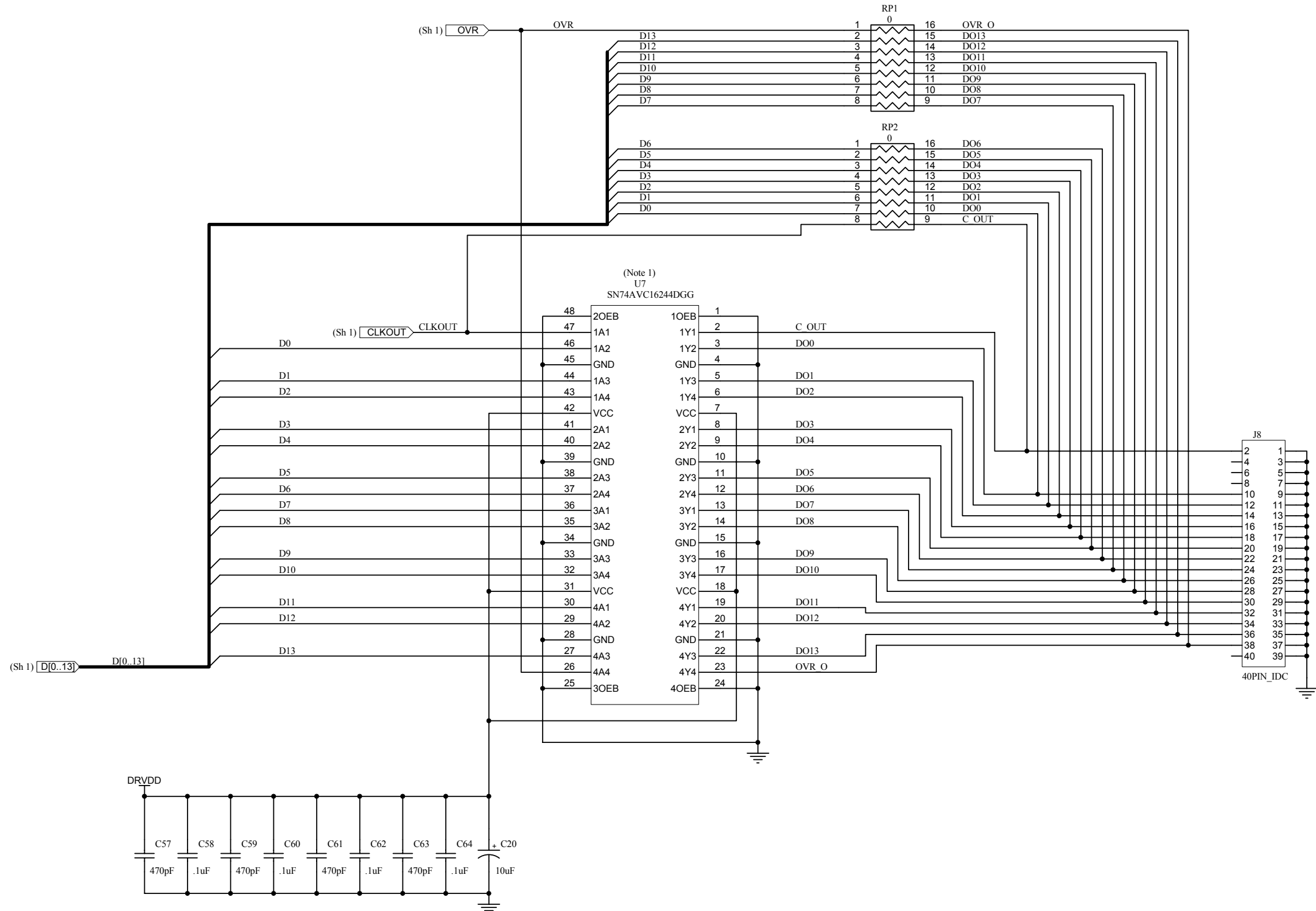
A

D

C

B

A

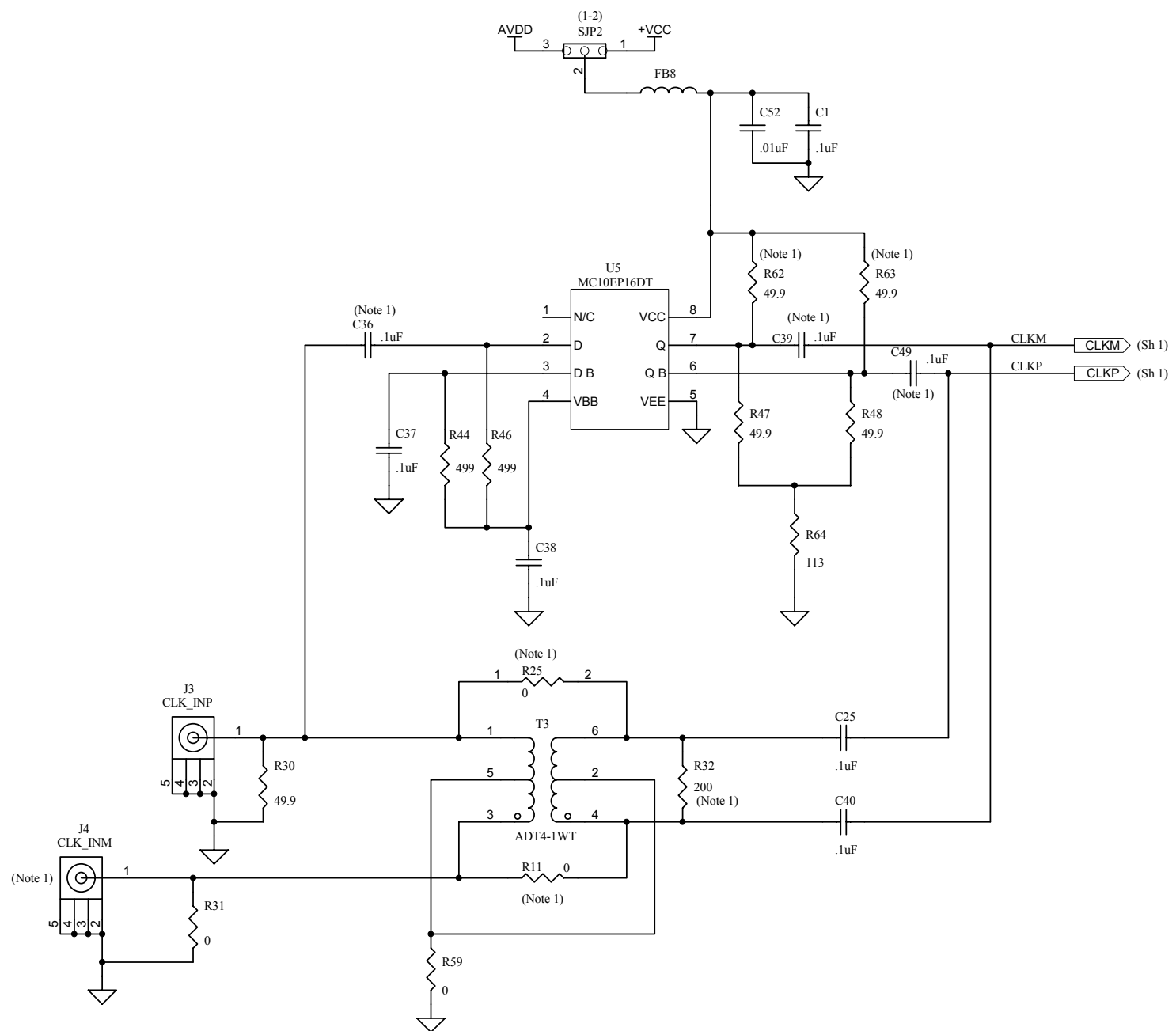


Note 1. Part not installed


TEXAS INSTRUMENTS
12500 TI Boulevard, Dallas, Texas 75243

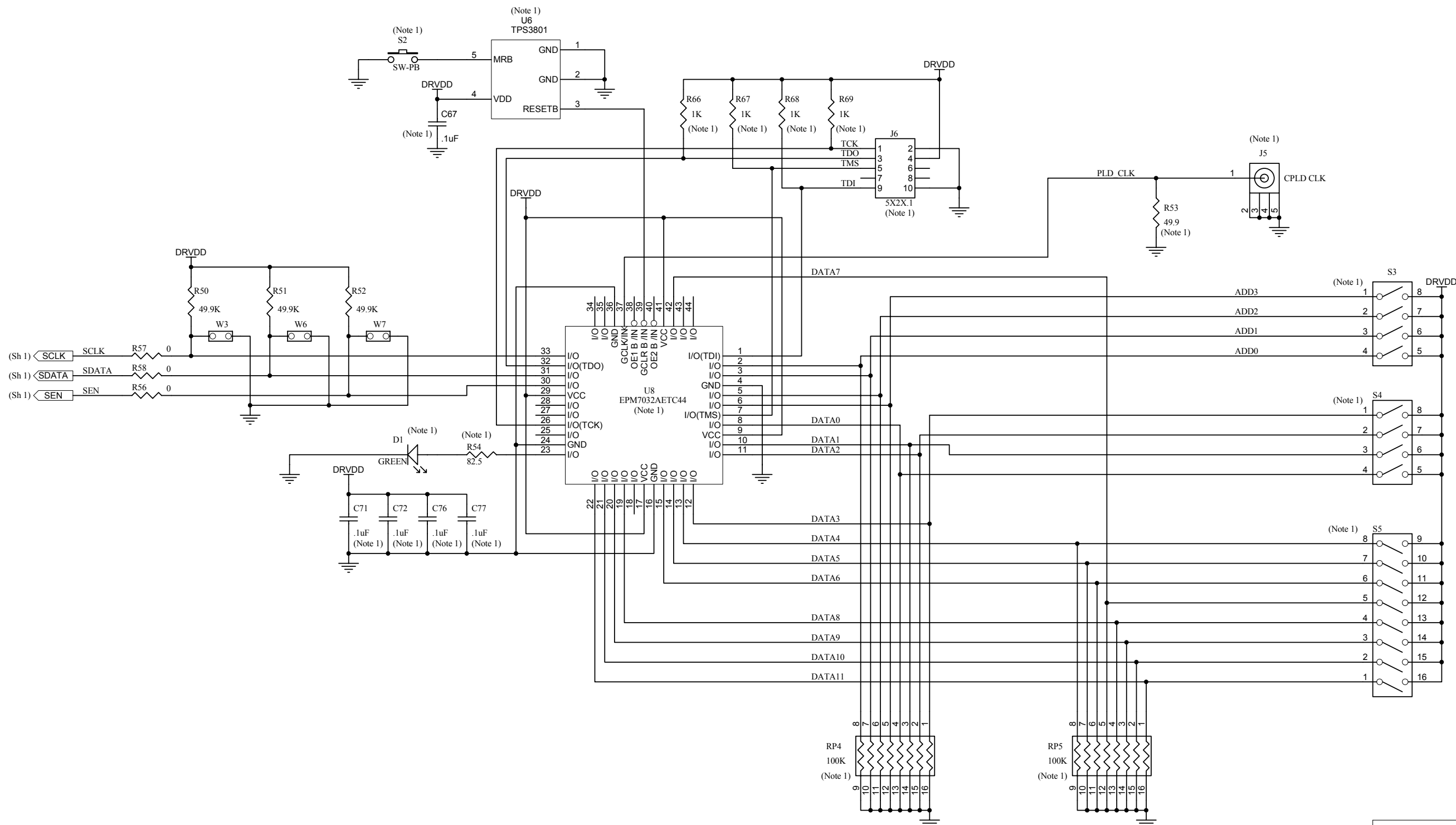
Title: **ADS5500**

Engineer: J. VENABLE	DOCUMENTCONTROL #	REV: C
Drawn By: Y. DEWONCK	DATE: 27-Jun-2005	SIZE: SHEET: 3 OF: 6
FILE:		



Note 1. Part not installed

 TEXAS INSTRUMENTS	
12500 TI Boulevard, Dallas, Texas 75243	
Title: ADS5500	
Engineer: J. VENABLE	DOCUMENTCONTROL #
Drawn By: Y. DEWONCK	REV: C
FILE:	DATE: 27-Jun-2005 SIZE: SHEET: 4 OF: 6

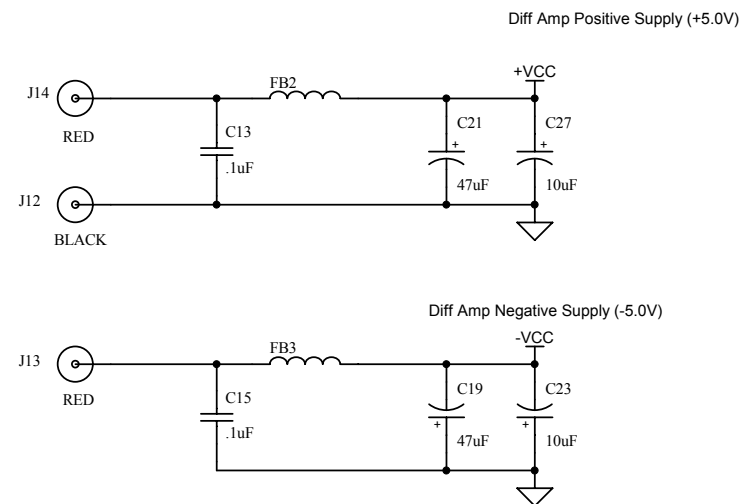
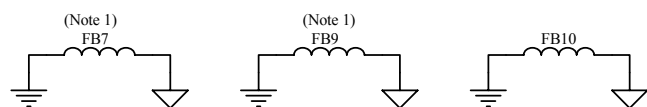
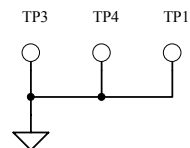
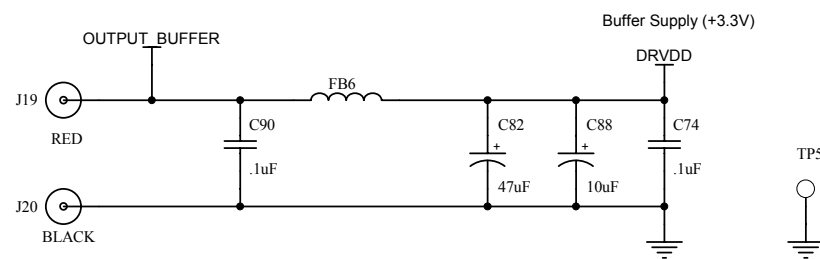
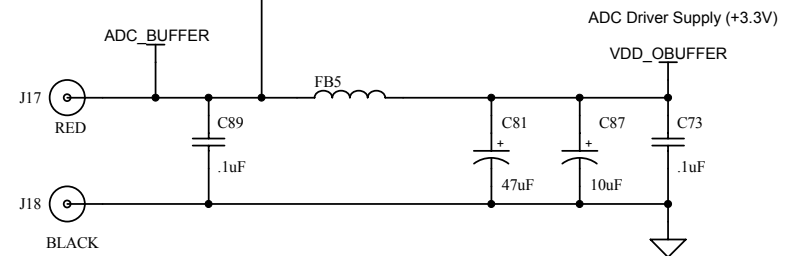
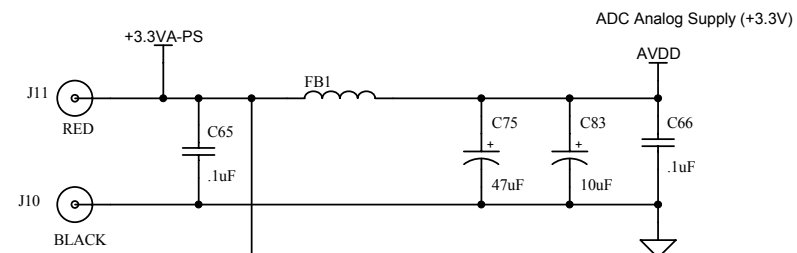


Note 1. Part not installed

TEXAS INSTRUMENTS
 12500 TI Boulevard, Dallas, Texas 75243

Title: **ADS5500**

Engineer: J. VENABLE	SIZE:	DATE: 27-Jun-2005	REV: C
Drawn By: Y. DEWONCK	FILE:		SHEET: 5 OF: 6



Note 1. Part not installed



12500 TI Boulevard, Dallas, Texas 75243

Title: ADS5500	
DOCUMENT CONTROL #	REV: C
DATE: 27-Jun-2005	SIZE: SHEET: 6 OF: 6

Engineer: J. VENABLE
 Drawn By: Y. DEWONCK
 FILE: